

LED variable message signs

LED variable message signs made with latest generation of LED technology and latest generation of microcontroller technology and ability of remote control

BASIC CHARACTERISTICS

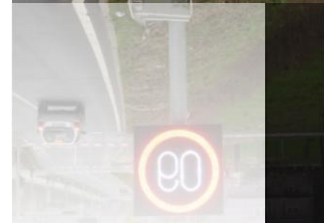
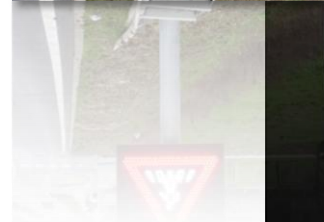
- aluminum housing
- front plate made of AlMg₃ for higher mechanical rigidity
- black front protective plate
- possible connection with semaphore systems
- EMC protected
- current controlled LEDs for linear light intensity
- built in microcontroller for controlling all regulation parameters
- environmental light sensor for automatic intensity regulation
- pulse - width modulated intensity regulation (0 to 100 %)
- LED error detection for each LED or each module
- modular construction for displaying any sign symbol
- remote control and communication
- solar power modules (optional)
- combination of solar and mains power for maximum consumption efficiency

MAIN PARTS

- stable construction according to local norms or project details
- microcontroller controlled system
- remote control unit (RS232, RS422, RS485, Ethernet etc.)
- accept cable wires up to 4 mm²
- communication connectors
- speed dependent radar control module for detecting oncoming or leaving vehicle (optional)
- internal electronics protected from corrosive atmospheres
- environmental protection IP54 do IP66
- highly efficient battery charger and controller
- solar panels (optional)
- 2 year warranty

TECHNICAL CHARACTERISTICS

Power supply:	230 V AC 50Hz (-30% to +20%) or 24 V DC (-35% to +30%) internally stabilized
Consumption	type dependent (from 40W to 3kW)
Environmental protection	IP 54 do IP 66 (type dependent)
Intensity regulation	according to EN 12966
LED control	per each LED or per module
Working temperature	-40°C to 60°C as stated for classes T1, T2, according to EN 12966-1
Light intensity	L3 according to EN 12966-1
Reflection factor	R3 according to EN 12966-1
Light angle	B1-B5 according to EN 12966-1

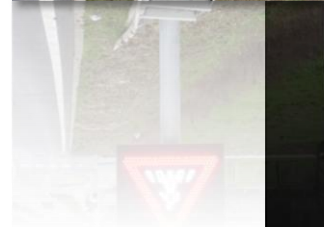


LED variable message signs

Example pricing for VMS with dimensions 100 x 100 cm (per unit price):

Basic configuration: variable message sign with front plate 100 x 100 cm about 10 do 20 cm thick and direct sun protective shield and following characteristics:

- microcontroller for symbol display control,
- environmental light sensor for automatic intensity regulation,
- protective transformer,
- power supply regulator for stabile and mains independent noise,
- internal electronics protected from corrosive atmospheres,
- mains connectors,
- connectors for connecting with semaphore system,
- connectors for radar detection unit,
- auxiliary connectors,
- modular system for quick repair in case of vandal damage,
- detailed drawings for foundation, mounting and electrical connection,
- 2 year warranty



Basic configuration price: call for pricing

Auxiliary equipment:

Description	Unit price
Typical bearing construction including foundation armature	call for pricing
Radar control unit with auxiliary equipment	call for pricing
Monocrystal Si solar panels nominal power up to 170W with bearing construction	call for pricing
Dry gel batteries 220Ah (C110) with metal housing for mounting on main construction	call for pricing



VMS/displays can be built with maximum dimensions 7 x 3 m.

Shipments can start from 7 to 65 days dependable of product size.

For higher quantities we can guarantee discount!

Programming services for special working logic: call for pricing.