

## Interactive LCD touch-screen displays

LCD screens with active touch-screen technology. Modern and trendy design with modular feature set brings user experience to new level.

### BASIC CHARACTERISTICS

- housings made of various modern and high quality materials like stainless steel, corain, plexiglass, wood, applicable for both outdoor and indoor usage
- laminated glass screen protection
- highly customizable design and feature set
- ethernet interface
- broadband (DSL) connectivity for providing access to online services as well as for remote management
- various LCD screen sizes ranging from 32" to 54"
- extra-wide beamer based screen solutions for screen sizes above 1,5 m

### MAIN PARTS

- housing of your choice
- laminated glass protection
- LCD screen size of your choice
- high quality energy supply components
- communication interfaces
- customazible computer system
- environmental protection starting from IP54
- EMC protection

### TECHNICAL SPECIFICATIONS

Power supply	230 V AC 50Hz (-15% to +10%)
Consumption	from 150 to 450 W (do max 1kW for beamer based systems)
Environmental protection	IP 54
Controlling system	1-4 core CPU, HDD 250 GB - 1TB, graphical system optimized for specific customer needs
Energy supply	Moeller industry grade components
Screen size	from 32" to 54" (up to 2,5 m for beamer based systems)

**2 year warranty**

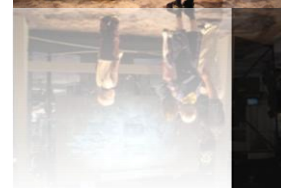


# Interactive LCD touch-screen displays

Example: Advertising info-kiosk with DSL connection, housing made of corian (2m height)



Example: interactive, beamer based screen with 2,2m diagonal



## Interactive LCD touch-screen displays

Price list (please contact us directly for bigger screen sizes and beamer based systems)

Description	Screen size 32"	Screen size 40/42"
Standar video equipment: - LCD screen size 32" (16:9) - active touch screen 32" (16:9) - laminated glass screen protection (6 mm) - PC (dual core Intel CPU, HDD 320 GB, 2 GB RAM, Power supply 400 W) - of the fly transformer, - miniature circuit breaker and residual current device, - surge arresters	51.455,00 kn	57.242,00 kn
Housing (without stand) - MDF/particleboard	6.420,00 kn	8.420,00 kn
Housing (without stand) - Corian	27.650,00 kn	29.650,00 kn
Housing (without stand) - Acrylic	26.630,00 kn	28.630,00 kn
Housing (without stand) - Stainless steel	32.450,00 kn	34.450,00 kn
Selfstanding housing (height 210 cm) - MDF/particleboard	8.800,00 kn	10.800,00 kn
Selfstanding housing (height 210 cm) - Corian	31.380,00 kn	35.380,00 kn
Selfstanding housing (height 210 cm) - Acrylic	30.660,00 kn	34.660,00 kn
Selfstanding housing (height 210 cm) - Stainless steel	40.000,00 kn	41.330,00 kn
Stand - Wood	2.060,00 kn	2.450,00 kn
Stand - Stainless steel	6.430,00 kn	6.900,00 kn
<b>Interactive software</b>		
Packaged software (2D): - Custom User Interface design - 20 static interactive screens - System installation and calibration	11.500,00 kn	
Packaged software (3D + video effects): - Custom User Interface design - 20 static interactive screens - System installation and calibration	22.000,00 kn	
Custom software development	ask for pricing	
<b>Renting</b>		
Rent 1 day	1.400,00 kn	1.700,00 kn
Rent 1 week	4.600,00 kn	5.100,00 kn
Rent 1 month	9.500,00 kn	10.500,00 kn
Rent 1 month+	ask for pricing	

Products prices includes (not applicable for Renting options):

- Delivery and installation on your premises
- System initialization and calibration
- Power supply installation

1-2 year warranty (depending on product type)

Products delivery time: 20 to 65 days (depending on product type and size).

Ask for Volume discount!

